

# State of Wyoming Corner Record

(In compliance with the *CORNER PERPETUATION AND FILING ACT*, Wyoming Statutes, 1997, Section 33-29-140, et seq., and the Rules and Regulations of the Board of Registration for Professional Engineers and Professional Land Surveyors)

Reverse side of this form may be used if more space is needed.

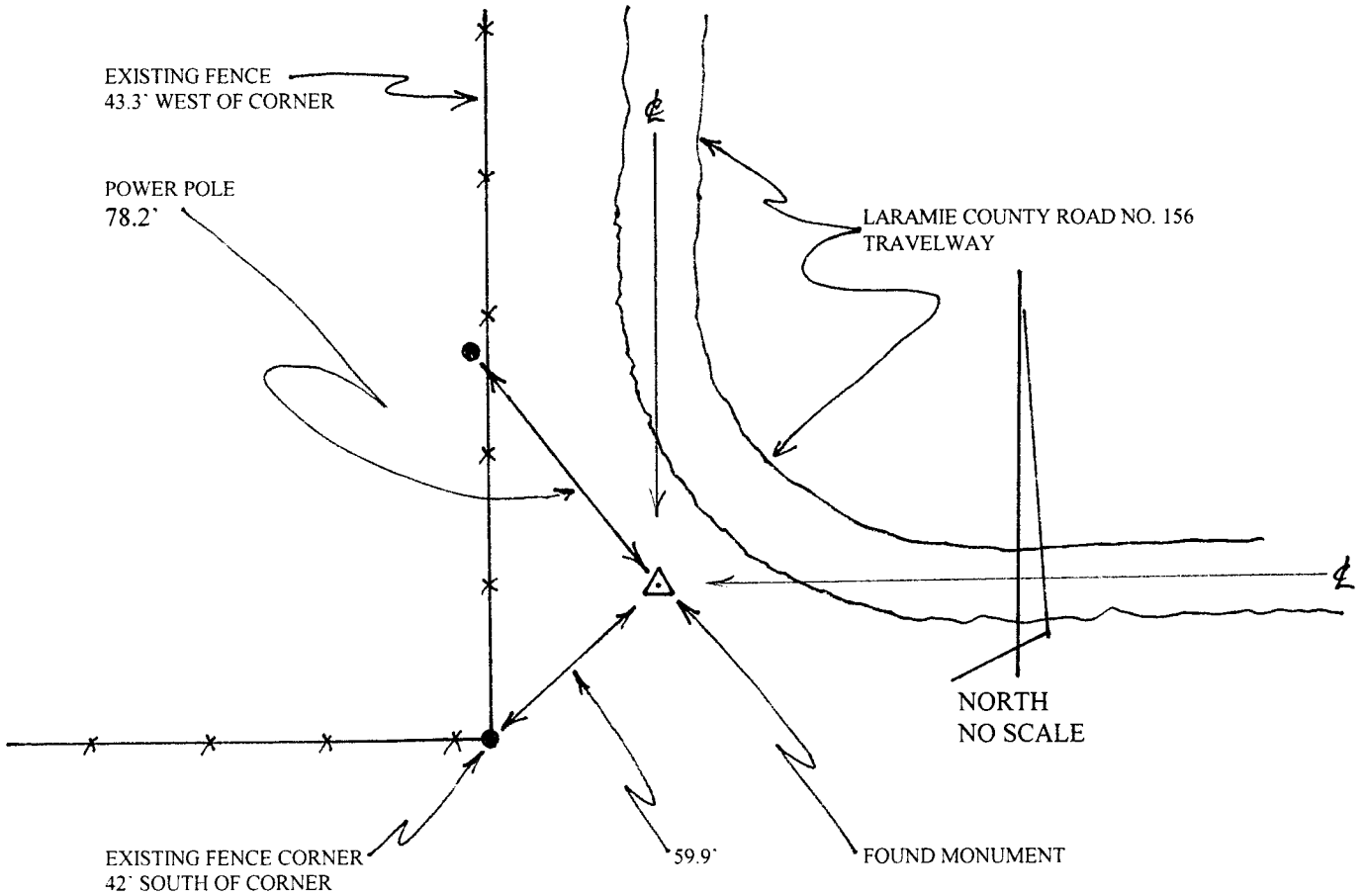
Record of original survey and citation of source of historical information (if corner is lost or obliterated). Description of corner monumentation evidence found and/or monument and accessories established to perpetuate the location of this corner. Sketch of relative location of monument, accessories, and reference points with course and distance to adjacent corner(s) (if determined in this survey). Method and rationale for reestablishment of lost or obliterated corner.

Section Corner: 8, 9, 16 & 17, T14N, R61W, 6<sup>th</sup> PM, Laramie County, Wyoming.

GLO record: 18"x9"x7" Lime Stone. Searched for but not found.

Found: 3" dia. Aluminum Cap set on a rebar, 3" above ground, with proper identification and LS 6097, dated 2011.

This corner appears to have been reestablished by the intersection of the centerlines of Laramie County Road No. 156 to the North and East. Distance to the west and the N.W. Cor. of Section 17 (see LS 519 Corner Record and found original stone) was 5292.88', which is consistent with other long measurements when compared to the original GLO record distances. I am familiar with in the area. So, based on these evidences I accepted the reestablished corner as being a reasonable representation of the original position of the GLO survey.



SEE MAP ON BACK OF THIS PAGE FOR TIES TO SURROUNDING CORNERS.

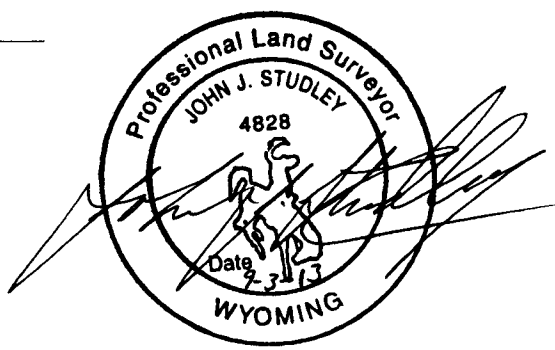
Date of Field Work: SEPT. 2013 Office Reference: \_\_\_\_\_

### CROSS INDEX DIAGRAM

A	1	2	3	4	5	6	7	8	9	10	11	12	13	14	15	16	17	18	19	20	21	22	23	24	25
B																									
C			6		5			4					3												1
D																									
E																									
F																									
G																									
H																									
J																									
K																									
L																									
M																									
N																									
O																									
P																									
Q																									
R																									
S																									
T																									
U																									
V																									
W																									
X																									
Y																									
Z																									

Land Surveyor / Firm / Address  
Studley Land Surveying, PC  
John J. Studley, PLS No. 4828  
615 West Dale Blvd.  
Cheyenne, WY 82009  
 Telephone: 307-287-4755

This corner record was prepared by me or under my direction and supervision.  
 SEAL & SIGNATURE



Corner Name: Section Corner common to Sections: 8, 9, 16 & 17 T 14 N R 61 W : 6<sup>th</sup> P.M. Cross-Index No.: J-9  
 SBRPEPLS/PLSW: March 1994; PLSW January 1998

N.W. COR.  
SEC. 17  
LS 519

2640' (R)  
2646.44' (M)

N. ¼ COR.

2640' (R)  
2646.44' (M)

N.E. COR.  
SEC. 17  
LS 6097

SECTION 17  
T.14N., R.61W., 6<sup>TH</sup> P.M.  
LARAMIE COUNTY, WYOMING

S.W. COR.  
SEC. 17  
LS 2500

2643.78' (M)  
2640' (R)

S. ¼ COR.

2643.78' (M)  
2640' (R)

S.E. COR.  
SEC. 17  
LS 2500

N  
O  
R  
T  
H

SCALE  
1" = 1,000'